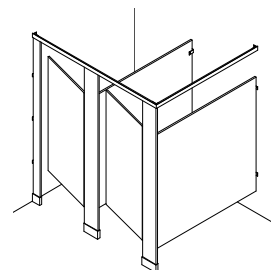


Banyan Series – Laminate Toilet Compartment Data Sheet

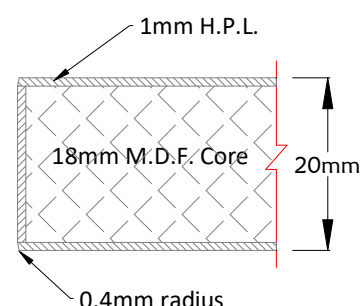


The **Banyan Series** laminate toilet compartment system is designed for commercial and institutional applications where aesthetics and durability are required within a limited budget and reduced lead time. The system comprises of prefabricated components based on AutoCAD shop drawings, assembled on-site with specialized hardware & fasteners. Available with various hardware and privacy options to meet the exact requirements of your project.



Components:

All doors, panels, stiles and urinal screens are made of high quality M.D.F. (Medium Density Fibreboard), laminated all sides with 1mm thick H.P.L. (High Pressure Laminate), bonded under pressure at 85psi using a specially formulated spray applied contact adhesive. Stiles shall contain a 3mm thick steel plate, laminated and pinned within the M.D.F. core, and welded to a 9mm thick steel levelling bar, forming a single structural unit for anchoring. All components shall have a uniform finish thickness of 20mm and edges have a 0.4mm half round to prevent chipping. Urinal screens are rectangular; have 50mm radius top and bottom corners with a finished thickness of 25mm.



Banyan Series cross-sectional view

Hardware Options:

- **Standard** – Designed for in-line door and stile configuration. Pair of hinges are rising butt type and are fully adjustable to hold the door of an unlatched compartment either partially open OR fully closed. The hinges shall facilitate emergency entry to a latched compartment by allowing the door to be lifted 1/2" thereby disengaging the latch. Brackets are standard width stirrup brackets with single point fixing. Latches and coat hooks include a buffered stop, preventing abrasion from slamming doors. Stile shoes are 22gauge x 4" high with offset top flange for extra strength against deflection. All hardware is of type 304 stainless-steel, satin finish.
- **European** – Designed for overlapping door and stile configuration. Pair of hinges are rising butt type and hold the door of an unlatched compartment partially open. Indicator latches shall facilitate emergency entry to a latched compartment by retracting the latch from the outside with a flathead screwdriver. Brackets are standard width stirrup brackets with single fixing points and rounded corners. Doors and coat hooks shall have a buffered stop preventing abrasion from slamming doors.

Banyan Series – Laminate Toilet Compartment Data Sheet

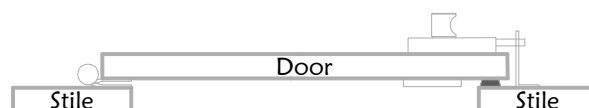


Stile shoes are 22gauge x 4" high with offset top flange for extra strength against deflection. All hardware is of type 304 stainless-steel, satin finish.

- **Anti-Vandal** – Designed for in-line door and stile configuration. 1-1/2 pair of hinges are rising butt type and fully adjustable to hold the door of an unlatched compartment either partially open OR fully closed. The hinges shall facilitate emergency entry to a latched compartment by allowing the door to be lifted 12mm thereby disengaging the latch. Double wide stirrup brackets have twice the fasteners and holding capacity. Latches and coat hooks include a buffered stop, preventing abrasion from slamming doors. Keepers are through bolted for extra durability. Stile shoes are 22gauge x 4" high with offset top flange for extra strength against deflection. All hardware is of type 304 stainless-steel, satin finish.
- **Institutional** – Designed for in-line door and stile configuration. Full height spring hinges keep the door of an unlatched compartment fully closed. The hinges shall facilitate emergency entry to a latched compartment by allowing the door to be lifted 12mm thereby disengaging the latch. Full height continuous brackets provide the ultimate holding capacity. Latches and coat hooks include a buffered stop, preventing abrasion from slamming doors. Keepers are through bolted for extra durability. Stile shoes are 22gauge x 4" high with offset top flange for extra strength against deflection. All hardware is of type 304 stainless-steel, satin finish.



In-line door & stile

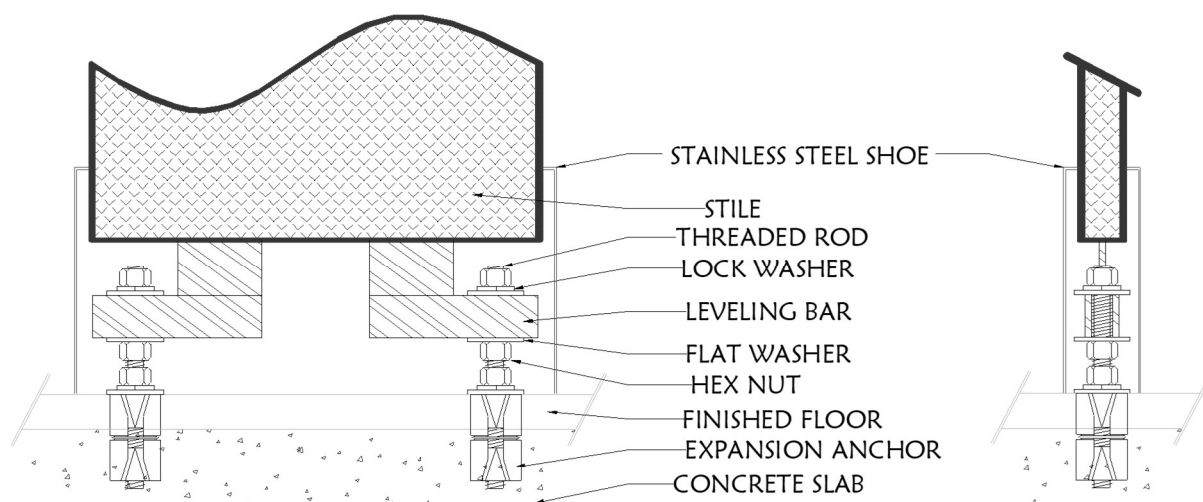


Overlapping door & stile

Fasteners:

All fasteners are anti-vandal, pin-torx, stainless steel screws. Doors and stiles are fitted with insert nuts for hinges and latches to accept machine screws, which also come factory furnished with thread lock. Bracket fasteners use self-thread screws and expansion wall anchors where applicable and through bolted sex-bolts. Levelling bars use 3/8" diameter threaded rod, hex nuts, flat and lock washers and double expansion shield anchors to achieve secure floor anchoring (see below steel core levelling bar detail).

Banyan Series – Laminate Toilet Compartment Data Sheet

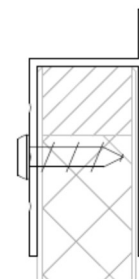


Privacy Options:

- **Standard Privacy** – Doors and panels start 305mm above the finished floor and are 1473mm high.
- **Maximum Privacy** – Doors and panels start 152mm above the finished floor and are 1625mm high.
- **Ultra Privacy** – Doors and panels start 152mm above the finished floor and are 1777mm high.

Headrail:

Only used when applicable, the headrail is for Overhead Braced toilet compartments installations. The special purposed headrail is unique to Pouchet, made from 1/8" extruded aluminium with linear grooves on both sides; a vertical ridge for added strength and to discourage gripping; and a silver baked-on enamel paint finish to protect the raw mill aluminium from scratches and corrosion.



Warranty:

The **Banyan Series** laminate toilet compartments shall be free from defects in material and workmanship for a period of three (3) years from date of purchase. A site visit will be arranged by a qualified technician to inspect any identified defects after which Neville C. Pouchet Limited will either repair or replace these components free of charge.